



REPLANTING ANNE ARUNDEL COUNTY

ONE TREE AT A TIME

GRAE BRUMMITT • JOSH CLARK
WITH ANN JACKSON AND KAREN ROYER



REPLANTING ANNE
ARUNDEL COUNTY:

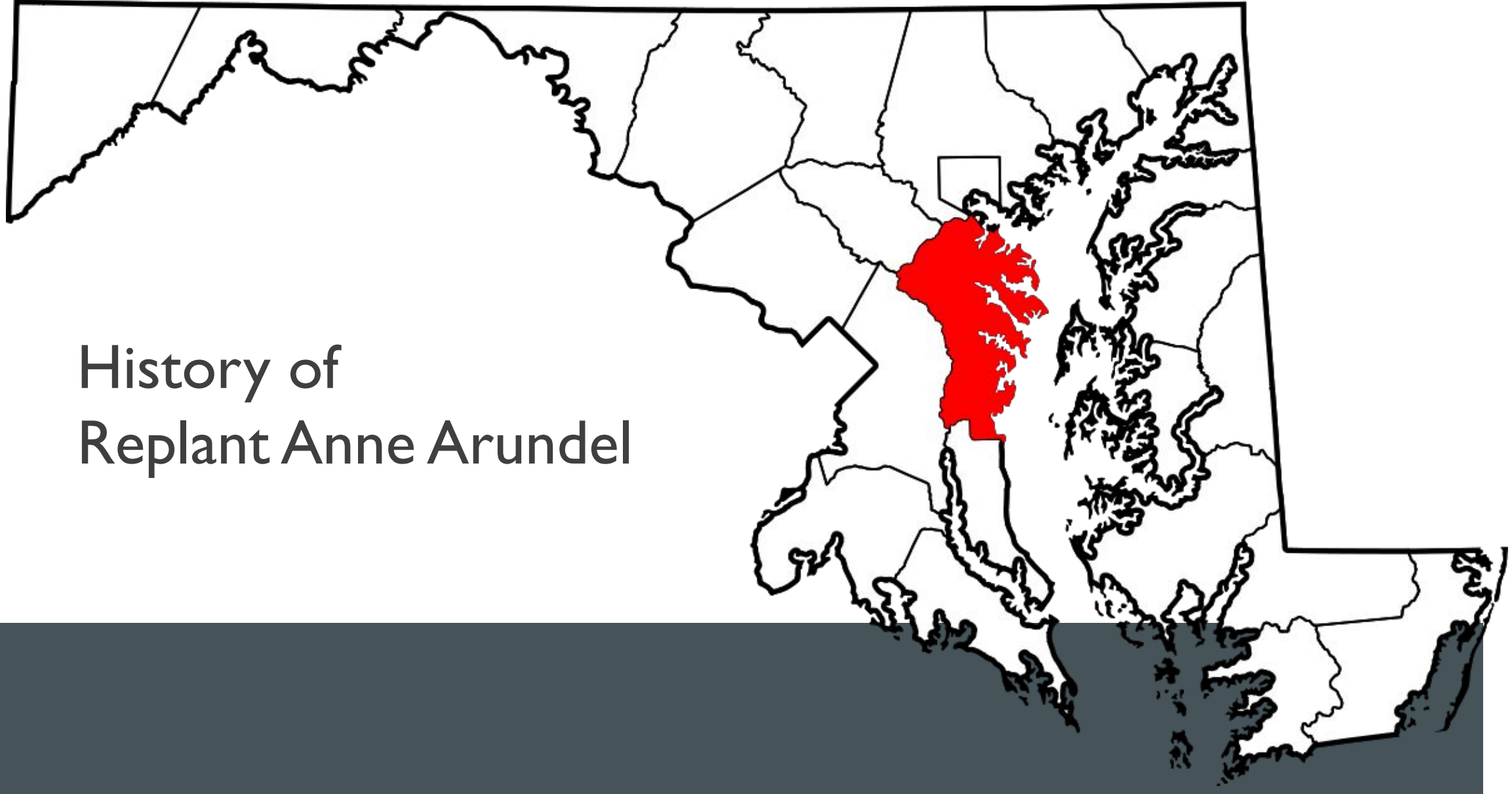
ONE TREE AT A TIME

Today's Agenda

- History of Replant Anne Arundel
- Program Overview
- Summary of Replant 2020
- Goals for Replant 2021
- Call to Action: How to Become a Tree Trooper!
- Breakout with Q&A

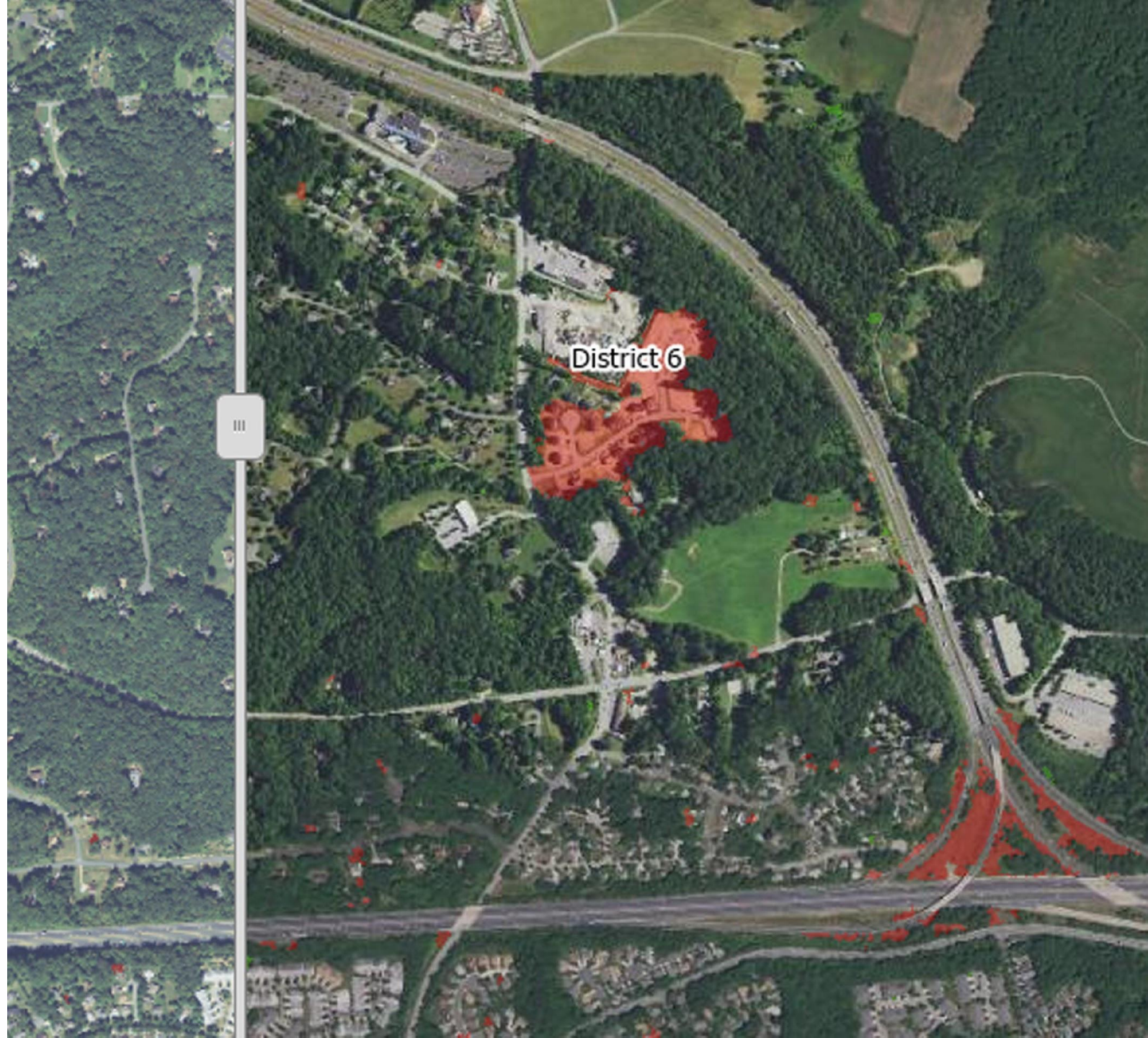


History of
Replant Anne Arundel



REPLANT ANNE ARUNDEL?

- AAC has **lost 2,500 acres** of forest from 2013-2017, which is the **highest rate per county in MD**
- AAC commissioned a canopy study that helped to inform a strategy to
 - Reduce canopy loss
 - Plant trees
- AAC contracted with WSA in 2020 “to plant trees” as part of a pilot program, “Replant Anne Arundel”



FORMING A PLAN

■ 8 Interviews

- Representatives from 8 local jurisdictions
- Ranged from Non-profits to Governmental Agencies
- Questions from Philosophy to Logistics of a Tree Planting Program

■ Lessons Learned

- Outreach and Engagement is key to start
- Maintenance is essential for success
- Best tree stock to plant



INTEGRATING REPLANT ANNE ARUNDEL INTO WSA PROGRAMS

- Tree Options for Existing WSA Programs
 - Canopies for Clean Water Communities
 - RiverWise:Trees for Congregational Grounds
 - Steward Impact/Capstone Projects
- Tree Options for the General Public
 - Backyard Buffers
 - Groves of Gratitude

***Priority is given to under-represented communities and target communities. Targeting is based on the Anne Arundel County GIS Tree Canopy Data and WSA diversity, equity and inclusion goals.



Program Overview

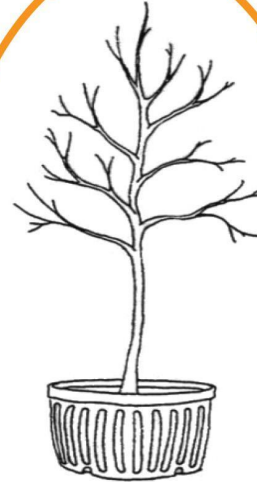


PROPOSED TREE STOCK

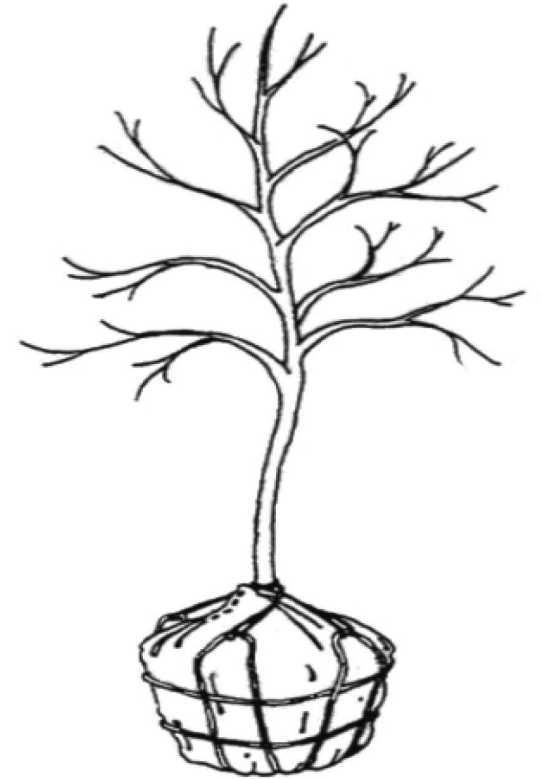
- “Goldilocks” Trees
 - 5 Gallon, .5-1” Caliper, 6’ (Above Deer Browse Line)
 - Instant Gratification
 - Easier for Volunteers to Plant
 - Stormwater Credits
 - Survivability
- Resilient Species



Bare Root Whip



Potted Tree



B&B Tree

Resilient Tree Species List

- MODFACs
- Industry Input
- Availability

USDA United States Department of Agriculture Forest Service Northern Research Station

Forest Service Home About the Agency Contact the National Office

You are here: [Northern Research Station Home](#) / [Tools & Applications](#) / [Climate Change Atlas](#) / sugar maple (*Acer saccharum*)

sugar maple (*Acer saccharum*) Model Reliability: High

Current Distribution Projected Future Habitat Predictor Maps

Climate Change Scenario Maps Help

HadleyCM3 – A1FI (High, "Harsh") Compare Scenarios

HadleyCM3 – A1FI (High, "Harsh") Climate Scenario

Little's Range Importance Value

- 0
- 1 - 3
- 4 - 6
- 7 - 10
- 11 - 20
- 21 - 30
- 31 - 50
- > 50
- No Data

Potential Changes in Abundance and Range (Future)

Cautions & Model Info

Notice: This is an updated version of the Climate Change Tree Atlas. You can view the [previous sugar maple page](#), or [browse the previous Tree Atlas](#).

About sugar maple

Climate Change Adaptability

5.8	0.86	MODFACs
1.34		What traits will impact sugar maple's ability to adapt to climate change, and in what way?:

Positive Traits

- Shade tolerance
- Environment habitat specificity

Negative Traits

- None

[Learn More About the Models](#)

Summary of Predicted Changes

Range and Niche Maps

Predictor Analysis



Resilient Tree Species List

Understory Trees							
Latin Name	Common Name	Mature Height	Mature Spread	Sun Requirements	Moisture Requirements	Soil Type	Notes
<i>Amelanchier canadensis</i>	Serviceberry	25'-30'	15'-20'	Full sun to Full shade	Moist to Wet	Clay, Loam, Sand	Apr-May bloom, white flowers; red-gold fall hue; edible berries
<i>Amelanchier laevis</i>	Allegheny Serviceberry	15'-40'	15'-40'	Full sun to Full shade	Moist to Wet	Loam, Sand	Apr bloom, white flowers;
<i>Cornus florida</i> 'Appalachian Spring'	Flowering Dogwood	15'-25'	15'-20'	Full sun to Part shade	Dry to Moist	Loam	Apr-May bloom, white flowers; tolerates clay and blackwalnuts; high wildlife value
<i>Crataegus viridis</i>	Green Hawthorn	20'-35'	20'-35'	Part shade to Full shade	Moist to Wet	Clay, Loam	Apr-May bloom, white; fall color purple to scarlet; winter interest; tolerates drought and clay soil; fruits edible but best left for birds
<i>Hamamelis virginiana</i>	American Witch-Hazel	15'-30'	15'-20'	Full sun to Full shade	Dry to Moist	Clay, Loam, Sand	Sept-Dec bloom, yellow flowers; winter interest; wide variety of medicinal uses
<i>Ilex opaca</i>	American Holly	15'-50'	18'-40'	Full sun to Full shade	Moist	Clay, Loam	May-Jun bloom, white-cream flowers; evergreen; birds eat berries and love trees for shelter; red berries and spiky leaves





AAC Funding of Replant Anne Arundel Does NOT Cover:

- Invasives Removal
- Maintenance

Credit Targets

Stormwater Credits

- Urban Tree Canopy Expansion
- Future Street Tree Credits

Awareness/Engagement Trees

- Backyard Buffers
- Restoration Plantings





Who Qualifies?

- Anne Arundel County Residents
- Communities with a *Tree Trooper*
 - HOAs, Congregations, Schools, Businesses, Etc.

Priorities

- Geographic Coverage
- Socio-economic Diversity
- Canopy Loss



GETTING TREES INTO THE GROUND

- Tree Troopers
 - An Action Group of Stewards & Community Volunteers
 - Alliance for the Chesapeake Bay Tree Steward Training
 - Tree Biology & Identification
 - Siting Trees in the Landscape (Proper Installation)
 - WSA Training
 - Community Outreach & Engagement
 - Plant Ordering & Delivery Protocols
 - Tree Reporting & Monitoring Protocols
- Contractors

Role of a Tree Trooper

- **Tree Trooper Training:** Weekly Zoom Sessions, from 6-7:30pm (March 31 - April 28, 2021)
- **Tree Project Development and Application** (April 1-August 1, 2021)
- **Community Engagement and Education** (anytime!)
- **Tree Installations** (September 15-November 15, 2021)
- **Tree Tracking and Maintenance**



CLEAN WATER GROWS ON TREES!

TREE PROJECT INSTALLATION OPTIONS

Planting Option 1: Volunteer Planted

Copay Per Tree: \$20

Copay Covers:

Tree Material, Deer Protection, Stakes, Mulch

Tree Trooper Responsibilities:

Project Development
Community Engagement
Installation Coordination

Community Responsibilities:

Site Preparation, Digging of Holes, Planting, Mulching, Installation of Deer Protection, Site Clean Up

Additional Option 1 Add On: Contractor Dug Holes

Additional Copay Per Tree: \$10

Copay Covers:

Contractor Pre-digging the holes for your Installation

Planting Option 2: Contractor Planted

Copay Per Tree: \$40

Copay Covers:

Tree Material, Deer Protection, Stakes, Mulch, Contractor Installation

Tree Trooper Responsibilities:

Project Development
Community Engagement
Installation Coordination

Community Responsibilities:

Site Preparation

Property Owner Agreements

- How long they will keep the trees
- Maintenance
- Inspection cycle





This Photo by Unknown Author is licensed under CC BY

Summary of Replant 2020

2020 Overview

- 4,803 Trees
 - 2,454 (DNR Backyard Buffers)
 - 2,349 (County Funded)
- 304 Residents Engaged
- 204 Projects Installed



Backyard Buffers

- 2,454 trees planted
- Size: Bare Root Seedlings
- 4 Bundle options
 - Shrub
 - Small Tree
 - Wet Canopy
 - Dry Canopy
- 79 residents engaged

*DNR Funded



Tree Trooper Program

- 1,175 trees planted
- Size: “Goldilocks”, 4-6ft tall
- 28 Projects
 - North County: 253 trees
 - Mid County: 265 trees
 - Annapolis area: 413 trees
 - South County: 244 trees
- 65 Residents Applied
- 44 Tree Troopers Trained



Tree Troopers & Engagement

- 128 residents engaged
 - 2 Clean Water Communities: Glen Isle (Riva) and Columbia Beach (Shady Side)
 - 6 Congregations
 - Woods Memorial (Severna Park)
 - Empowering Believers (Glen Burnie)
 - St. Andrews By the Bay (Annapolis)
 - Kol Shalom (Annapolis)
 - St. Philip Neri (Linthicum Heights)
 - Our Lady of the Chesapeake (Pasadena)
- Sandy Point State Park
- Jug Bay Wetlands Sanctuary
- Eastport-Annapolis Neck Library
- 17 Residential Communities



Restoration Plantings:

750 Trees

- Stored over summer by **the Providence Center**
 - 1 Gallon Seedlings
- Jug Bay Wetlands Sanctuary (Lothian)
 - 600
- Residence (Davidsonville)
 - 150



Groves of Gratitude

- 424 trees planted
- Size: 2-4 ft tall
- Single Tree options
- 4 Grove options
 - Food
 - Pollinator
 - Screening
 - Shade
- 97 residents engaged
- Center for Help



Anne Arundel Watershed Stewards Academy

GROVES OF GRATITUDE

Planting trees today to ensure a better tomorrow for all



Goals for 2021





2021 GOALS

■ 4,750 Trees

- 2,550 Bare root seedlings - BYB
- 1,700 Tree Trooper trees
- 500 Groves of Gratitude trees

■ 50 New Tree Troopers, while engaging existing Tree Troopers in maintenance and monitoring

■ 1,500+ residents engaged

■ Greater engagement of Northern and Western County and underrepresented communities.

Call to Action:
Become a Tree Trooper!



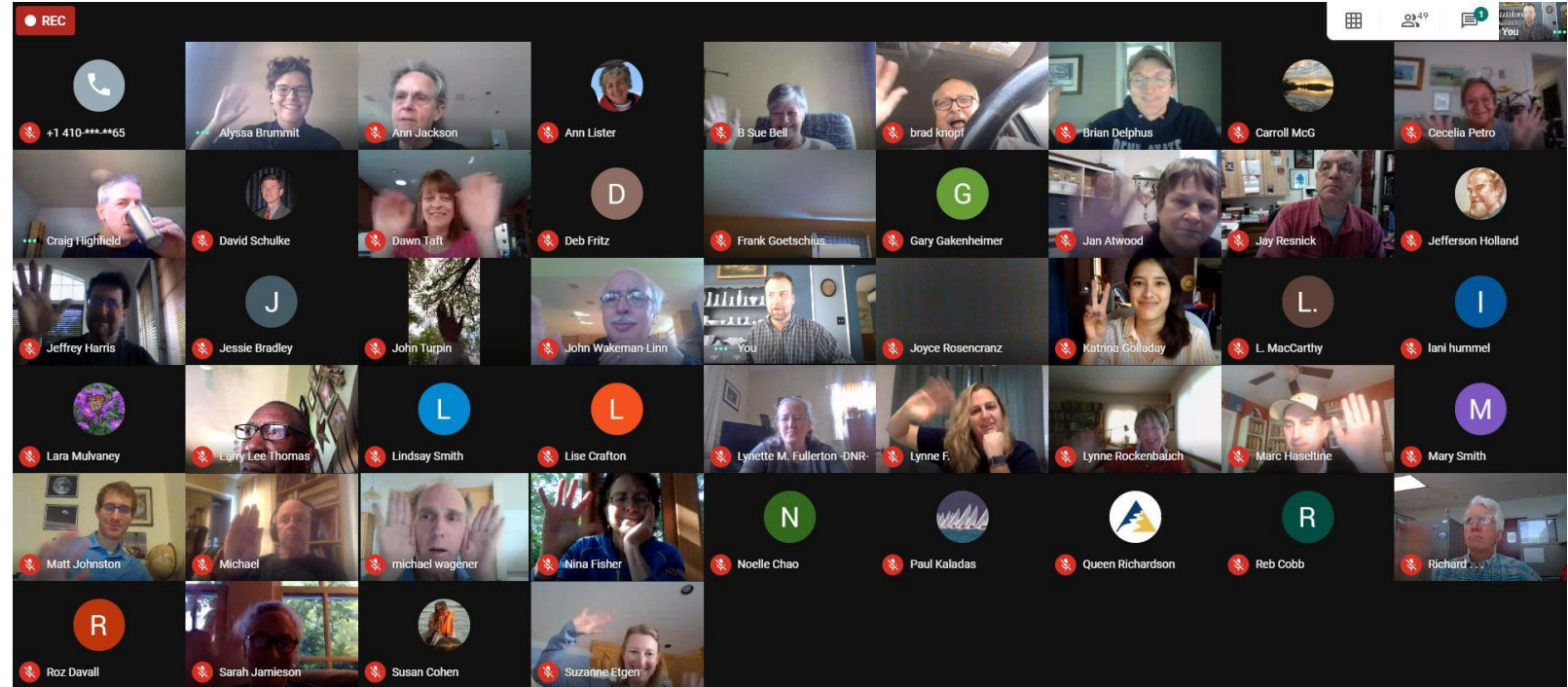
2021 Overview

- Backyard Buffers – Spring 2021
- Tree Troopers
 - An Action Group of Stewards & Community Volunteers
 - Alliance Tree Steward & WSA Tree Trooper Training
 - Online course, Wednesdays from 6pm-7:30pm: March 31st, April 7th, April 14th, April 21st, April 28th
 - Tree Biology & Identification
 - Siting Trees in the Landscape (Proper Installation)
 - Tree Outreach & Community Engagement
 - Plant Ordering & Delivery Protocols
 - Tree Reporting, Monitoring & Maintenance Protocols
 - Project proposals due: May 30th
 - Site visits and project finalizations: throughout the summer
 - Installations: Fall 2021 (October – November)
- Groves of Gratitude – Fall 2021



Next Steps:

- Visit aawsa.org/replant for more information.
- If you are interested in becoming a tree trooper, email Grae at cont-abrummitt@aacps.org
- Tree Trooper Training: Wednesdays from 6pm-7:30pm: March 31st, April 7th, April 14th, April 21st, April 28th



Q&A: Break out rooms

Room 1: Josh Clark and Karen Royer (Tree Trooper), focus on planting at institutions (congregations, schools, parks)

Room 2: Grae Brummitt and Ann Jackson (Tree Trooper), focus on residential plantings

